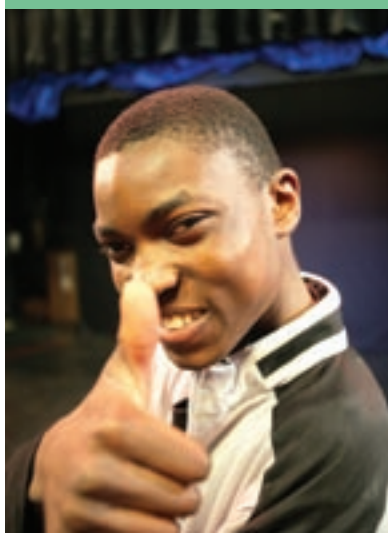




Reaching beyond all expectations



COLLEGE PROSPECTUS

Contents



3	Welcome to your College It's your Future
4-5	Being Part of your College
6-7	Developing your Independence
8-9	Living at College
10-11	Enabling Technology Your Health and Wellbeing
12-13	Your Learning Foundation Learning – Living and Lifestyle
14-15	Foundation Learning – Living and Work Work Related and Vocational Learning
16-17	Partnership Programmes
18-19	Your Future
20	Our Values



The National Star College is an independent specialist college working with learners who have physical, sensory or learning disabilities. Our qualifications, courses and pathways enable students to prepare for the best that adult life can offer.



Welcome to your College It's your Future

"An unforgettable and life changing experience" Richard



This is the place where learning is shaped around your own hopes and aspirations; where life skills training is tailored to your individual goals; where you are supported by staff who respect your choices and your lifestyle.

You can work with us on a residential, day, full or part-time basis, as part of your programme with another provider or even online.

The choice is yours.

Welcome to a place that reaches beyond all expectations.

**Welcome to the
National Star College.**

Being Part of your College

You are central to the College. Your ideas, opinions and hard work make the College the exciting and student centred place it is!



You can get involved by:

- becoming a student representative
- interviewing for new staff
- joining the Student Union
- giving feedback to tutors
- getting involved with staff training
- volunteering around campus or in the community
- working with managers on specific projects.

Both on-campus and in the wider community, you'll have access to a vibrant social scene, a huge range of clubs and organisations and every

opportunity to build valued and lasting friendships.

The choices are yours to make. You can pursue your interests and hobbies and get a taste of new ones. If you want to try different sports, clubs and activities, you'll get the support you need.

The Student Union is great at encouraging you to get involved, and it runs fantastic social events as well!

At the National Star College, life is about learning.



Developing your Independence

“The National Star College gave me more independence. I was really nervous when I came but now I’m ‘high’ in confidence” Tom



At the National Star College we will support you to improve skills such as:

- confidence
- assertiveness
- communicating in different settings
- directing your carers
- making your wishes known to others
- making choices and decisions
- keeping yourself safe.

You will also have the opportunity to learn practical things such as:

- cooking
- shopping
- household tasks
- mobility
- driving
- using public transport.

When you start at the National Star College you will be introduced to your own learning mentor. They will work with you to ensure you get the opportunities to learn and practise the skills that will make the most difference to your life and future.





Living at College

“I have learnt to make my own lunch, a healthy sandwich and it was gorgeous” Matthew



Living at the College is much more than simply 'staying here', you will learn a lot about yourself. What makes you tick? What do you like to do? Who do you like to be with and how do you respond to new challenges and change?

When you arrive at the College as a residential student, you will be allocated a room in one of our accommodation areas, depending on your individual requirements, friendship groups or course.

Each accommodation area is different, many have en-suite rooms and all have student kitchens for making snacks or meals. Rooms are well

appointed and specialist equipment is provided if you need it. Staff will support you to practise your independence skills in real life settings.

As well as the main campus at Ullenwood, we also have houses in Cheltenham and Gloucester. All are fully staffed and have access to nurses if you need them.

You will have lots of opportunities to join in community activities as there are regular bus services from the main campus into Cheltenham and Gloucester at weekends. Our off-site accommodation is only a short distance from the centre of town.

Our facilities and services include:

- *specialist enabling technologies and adapted rooms*
- *individualised personal care equipment*
- *specialist residential, medical and therapeutic staff*
- *Wi Fi access in most accommodation areas*
- *communal and kitchen areas*
- *great atmosphere and loads to do!*

All our accommodation is registered and inspected by the Care Quality Commission

Enabling Technology

“I can now use my communicator to talk, text, email and use my possum room” Helen

At the National Star College you will have access to state of the art technology and expertise to support your communication, mobility and independence.

Our therapy teams work closely with technology specialists to ensure that the latest equipment and support is available for you. This includes:

- the NEAT Room (Natstar Electronic and Assistive Technologies)
- alternative and augmentative communication
- information technology access
- environmental control technologies
- mobile technology.



Your Health and Wellbeing



A healthy lifestyle is really important and we offer a range of activities that can support you, including:

- swimming and hydrotherapy
- an adapted fitness suite
- sports clubs
- varied menus and special dietary options
- health advice and guidance.

Our therapists work together with you, your tutors, learning mentors and residential staff to make sure that therapy support is integrated into your lifestyle and college programme.

They will work with you to develop strategies and programmes to support your future life.

Our health & wellbeing services include:

- ***medical and nursing teams***
- ***physiotherapy***
- ***hydrotherapy***
- ***occupational therapy***
- ***speech and language therapy***
- ***behaviour management***
- ***psychology***
- ***mobility and travel programmes***
- ***enabling and assistive technology.***



Your Learning

Getting the right learning programme is vital, we will take time to understand exactly what is right for you

Our programmes offer learning in the right place at the right time – in therapy sessions, out in the community, where you live and through leisure clubs and activities.

We will work with you to find out:

- what you want to get out of college and what you want to do next!
- your functional skills (literacy, numeracy, communication and ICT)
- your interests, experiences or qualifications
- your therapy or support requirements.

Following an assessment you may be offered a place on one of three main pathways:

- Foundation Learning – Lifestyles and Choices
- Foundation Learning – Learning for Living and Work
- Work Related and Vocational Learning.

Each pathway contains different elements which are matched to your requirements by your learning mentor. Programmes are so individual and flexible that it is unlikely that any two students will have the same timetable!



Foundation Learning – Lifestyles and Choices

A course for people with profound and complex learning and/or physical disabilities



This course aims to help you make the most of adult life and have some fun along the way!

Working in very small groups with specialist staff support, you will develop the skills to make choices and communicate them to others. You will explore activities and interests and try new things.

Programmes are individual and flexible and can be full or part-time. We will work closely with you, your family and care providers to ensure you have access to the whole package of learning and support that you need.

Activities and learning include:

- communication
- concentration and engagement
- managing your behaviour
- daily living skills
- personal safety
- tolerance of new activities/experiences
- sequencing
- accessing the community
- health and fitness.



Foundation Learning – Learning for Living and Work

*A pathway for people with learning difficulties
and/or physical disabilities*



Work Related and Vocational Learning

*There is a huge range of work related and
vocational learning opportunities at the National
Star College and with our range of partners*



This programme will help you to realise your ambitions to become more independent and play an active role in the community.

Your pathway will take you through a mixed programme of independence activities, functional skills and work experience.

These programmes:

- provide 'hands on' learning in practical and subject areas
- support you to gain more independent living skills
- enable you to learn through community or enterprise projects
- offer a wide range of creative options.

You will learn the things that matter to you with our excellent range of learning and life skills facilities.

If you want to progress into work you will also learn in the work place and through the College's Enterprise Projects (these include a shop, bar, fitness facilities, recycling, horticulture and a theatre). We also have great links with other services and employers so you will have plenty of opportunities to learn things in other settings.

Learning for Living and Work programmes are offered at Entry Levels 1-3. For details visit: www.natstar.ac.uk

Our students progress on to:

- vocational and work related programmes
- voluntary, support or paid employment
- more independent living.

If you want to gain a qualification in a specific subject area, then our work related and vocational learning programmes are offered at Entry Level to Level 3.

Vocational programmes include:

- Multi Media
- Creative and Performing Arts
- Information Technology
- Customer Services
- Youth and Community
- Sport and Fitness
- Health and Child Care
- Generic Work Skills.

Other courses are available through partnerships with local Further Education Providers. Your core programme will include functional skills and we will also link you up with employers and community groups so that you can gain valuable hands-on experience.

Our students progress on to:

- further and higher education
- employment
- voluntary occupation.



Partnership Programmes

Main course programmes not for you? You can use the expertise and equipment at the National Star College through our partnership programmes as well



Here are some examples of our partnership programmes. We are working on new ones all the time – so if you think we have something to offer you, please get in touch.

Type of programme	What happens at National Star College	Who will we be working with?	What will you be learning?	Who do I ask about this programme?
Short residential programmes	You stay at National Star College for between 6 - 12 weeks depending on your programme	Usually your FE college but sometimes Social Services or Care Providers	Usually Independence skills, sometimes travel or work skills	Your college careers officer or social worker
Specialist learning or technology assessments	An in-depth assessment focused on your learning, living or work requirements. This may be done on a day or residential basis	Schools, colleges or universities, employers or Social Services	Valuable information about how you learn best and what equipment or technology can help you	Your teacher, careers officer, employer or social worker
Supported work placements	You will be working at the College (in the shop, grounds, fitness suite etc) with support from our job mentors	Colleges and schools and/or employers	Work skills; how to be part of a team; what your rights and responsibilities are at work	Careers advisor, Jobcentre Plus advisors, your college or your school
Therapy based programmes	Individual or group sessions designed around your needs – maybe as a short residential course, in your college or on an appointment basis	Your Health Authority, employer, college or care provider	How to maintain and develop skills or use specialist equipment such as AAC devices, enabling technology or mobility aids	Your GP, current therapist, employer, social worker or care provider

“The National Star College has taught me greater independence and I will take that away with me for the rest of my life” Victoria



Your Future

“I can’t pick out one thing that has been the best because it has all been great” Brooke



What do you want to do when you leave college? It may seem a long way off now but it's something we'll be helping you with as soon as you arrive.

After the National Star College you may want to:

- carry on with your education in a mainstream college
- move to a residential setting to develop more life skills and independence
- go on to higher education
- move into employment, volunteering, self employment or work apprenticeships.

Our learning mentors and transition specialists will help you think about what you want to do when you leave.

They will support you to liaise with Careers and Social Services and explore employment or volunteering options in the areas you are moving to. They have lots of information on the choices available and can arrange visits for you and your family.



Support for your future includes:

- *Transition workshops*
- *Partnerships with Employers*
- *Transition events for students and families*
- *Careers Information, Advice and Guidance*
- *Housing assessments*
- *Partnerships with Housing and Care providers*
- *Information and advice on available benefits*

Our Values

Mission Statement

To enable students to prepare for the best that adult life can offer through innovative, cost effective programmes of education, training and personal development.

Equality & Diversity Statement

The National Star College is committed to ensuring equality of opportunity for all who learn and work here, where all are treated fairly, equally and with respect and are not discriminated against on the basis of age, gender, disability, race, sexual orientation, religion or class

We will raise awareness amongst our students, staff and those working with us of the College's commitment to ensure that equality and diversity is recognised as part of our everyday life.

Safeguarding Statement

We recognise our moral and statutory responsibility to safeguard and promote the welfare of students. We work to provide a safe and welcoming environment where students are respected and valued. We are alert to the signs of abuse and neglect to ensure that students receive effective support and protection.

Compliments and Complaints Procedure

We pride ourselves on having a detailed and widely advertised Compliments and Complaints Procedure, which is readily available to staff and learners alike. (Copies can be made available in a variety of formats).





Reaching beyond all expectations

To visit us or to find out more about the National Star College, please contact us:

National Star College,
Ullenwood, Cheltenham,
Gloucestershire
GL53 9QU

Tel: 01242 527631
Fax: 01242 534920
Email: enquiries@natstar.ac.uk
www.natstar.ac.uk

National Star College is a business name for the National Star Centre for Disabled Youth, a company limited by guarantee and registered in England (No 522846). Registered Charity No 220239 VAT Registered No 656 0953 18
Registered Office: Ullenwood Manor, Cheltenham, Gloucestershire GL53 9QU